

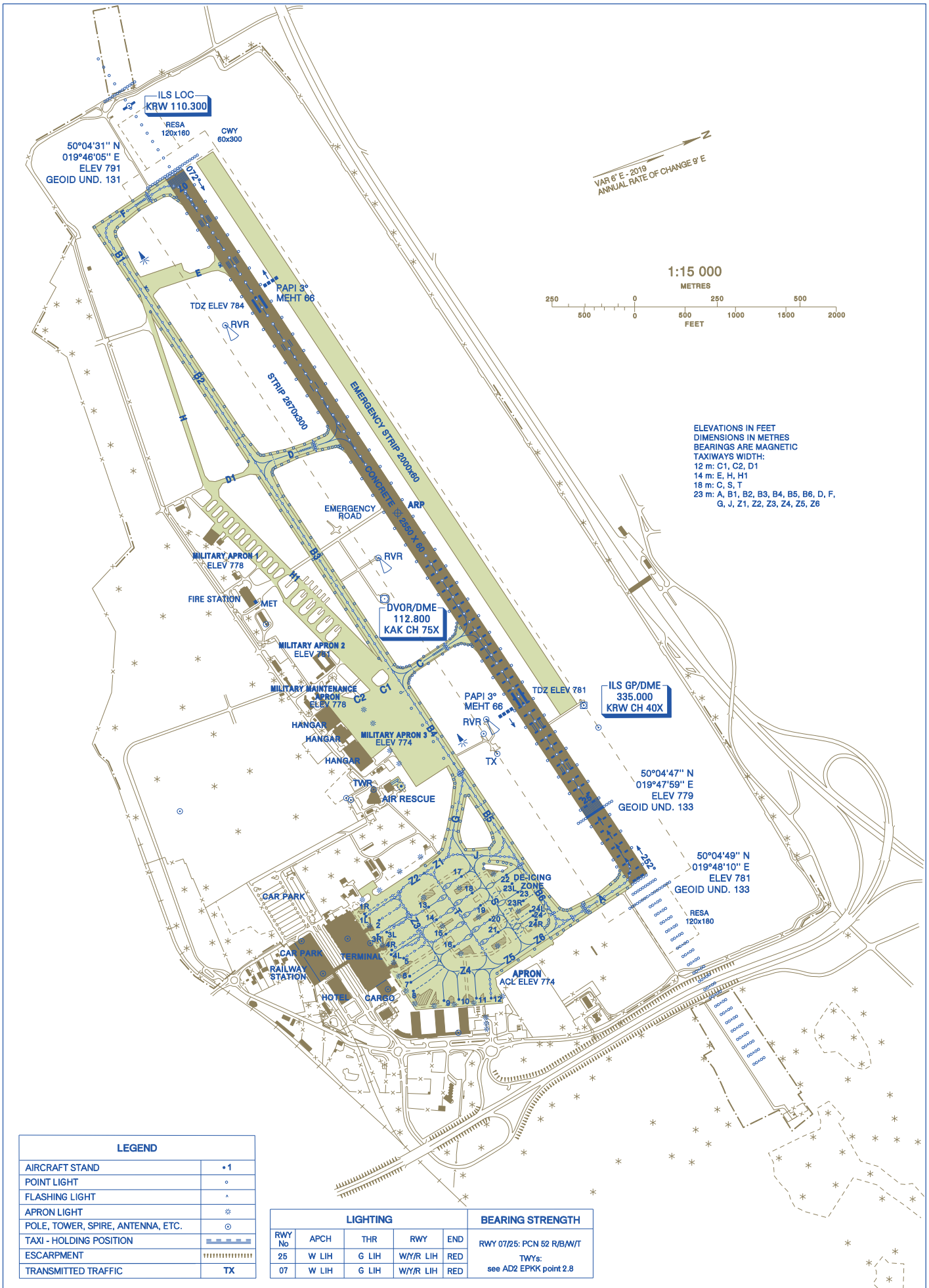
AERODROME CHART - ICAO

50°04'40" N
019°47'05" E

ELEV 791 ft
GEOID UND. 131 ft

Kraków GROUND 118.105
Kraków TOWER 123.255

Kraków - Balice



ELEVATIONS IN FEET
DIMENSIONS IN METRES
BEARINGS ARE MAGNETIC
TAXIWAYS WIDTH:
12 m: C1, C2, D1
14 m: E, H, H1
18 m: C, S, T
23 m: A, B1, B2, B3, B4, B5, B6, D, F,
G, J, Z1, Z2, Z3, Z4, Z5, Z6

| LEGEND | |
|-----------------------------------|-----|
| AIRCRAFT STAND | • 1 |
| POINT LIGHT | o |
| FLASHING LIGHT | * |
| APRON LIGHT | * |
| POLE, TOWER, SPIRE, ANTENNA, ETC. | o |
| TAXI - HOLDING POSITION | --- |
| ESCARPMENT | |
| TRANSMITTED TRAFFIC | TX |

| LIGHTING | | | | | BEARING STRENGTH | |
|----------|-------|-------|----------|-----|---------------------------------|--|
| RWY No | APCH | THR | RWY | END | RWY 07/25: PCN 52 R/B/W/T | |
| 25 | W LIH | G LIH | W/YR LIH | RED | TWYs: see AD2 EPKK point 2.8 | |
| 07 | W LIH | G LIH | W/YR LIH | RED | | |